

Quilting Times

2025

February

Volume 27 Issue 6

Join us!!

Tar River Piecemakers Quilting Guild

Meets at 9:00 the second Saturday of every month at the Arts Center at the Imperial Centre for Arts & Sciences 344 Falls Road, Rocky Mount, NC. 27804

From The Leadership Team!

Greetings Quilters,

I know we all missed seeing each other in January but don't worry - we will just have the program that we had planned for the last meeting at our February meeting. That means we will have our Bee presentation then and we'll move the yard sale to March. We'll have an overview of what each Bee has been working on for those of you who currently do not belong to a Bee. So, hold on to all those items that you no longer want or need until March and please let one of the leadership members know how much space you'll need to display your things. Our first sewing challenge for the year - some type of applique project will be discussed and for those of you who would like some help getting started, we can answer questions and give a few ideas during the break or after the meeting. Duane will be bringing a few supplies to give you an idea of things you might need to get started. This cold weather has been a bit of a challenge for some of us so stay inside to sew & stay warm! See you on Feb 8th!

Mary, Duane, Carol and Lori – Your Leadership Team

Welcome new members!

Join the TRPQG Members Facebook page

Join the EQ8 & Sew-Social Bees on the 4th Saturday

Consider contributing to the newsletter

Our Next Meeting

Saturday February 8, 2025
9:00AM Imperial Centre

Bring a Friend

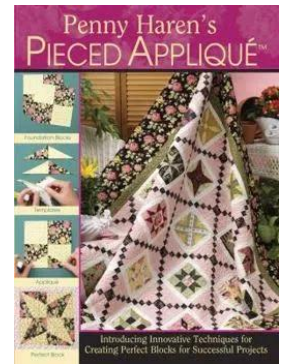
Wear Your Name Tag

Return Borrowed Library Books

Book Review

Penny Haren's Pieced Applique

By Penny Haren



Pieced applique is a new technique, according to the author, that enables the quilter to construct traditional blocks with greater accuracy than could be done in the past. This report has taken far more time to do than any of the others I've done in the past. I wasn't sure that I understood the directions so decided to try to make one of the twenty-five blocks to see if I understood the directions. I was glad that I did try it. I had to do it twice to get it correct. The block I chose to make was called Star of the East. I first was instructed to make a Kaleidoscope Foundation Block. I made a pinwheel block and then put the template for the kaleidoscope on top of this block. There were lines showing you where to match the lines to the seams. I cut 1/4" away from the kaleidoscope template. Then I was to cut four squares of the dark fabric that were 2 1/4". The 1 3/4" template was glued to the wrong side of these squares. You were to run a thin layer of glue on 2 of the four sides (the sides not on the edges of the block) and glue the raw edges down. You would then applique them to the kaleidoscope block. After they were stitched down and the glue had dried, the author wet the fabric and pulled out the paper template (I was just able to pull the paper out). Inside the block the edges are sewn or applied by hand. The outside edges are left raw until you construct whatever you plan to do with the block. You would join the blocks with machine piecing using a 1/4" seam. The blocks are quite pretty. This would not be a quick quilt to make. You are able to make small blocks, however, and be very accurate with their construction. This might be a fun project to work on during the cold days of winter.

Your librarians,
Martha Blount
Maryann Rettino

As we ring in the new year, we celebrate the *passion* that binds us together in the art of *quilting*. With our *pins* and *needles*, we stitch together not just *triangles* and *squares*, but a tapestry of *friendship* and shared *love of quilting*. Whether we are cutting through fabric with our *scissors* and *cutters*, or pressing seams with our trusty *iron*, each step brings us closer to creating something beautiful.

This year, let's continue to build our *stash* and share *fat quarters*, transforming *backing* and *binding* into heirlooms of care. With *rulers*, *mats*, and *thread* in hand, we come together with our *thimbles* and our hearts full of joy, knowing that every stitch is a part of something greater.

We look forward to another year of *sewing* together, creating new quilts, and fostering the bonds that make this guild so special. Here's to another year of crafting memories, one *stitch* at a time!

Happy Quilting,

The Tar River Piecemakers Quilt Guild

Submitted by Harvey Sopher

Thanks to Harvey for providing some photos from 2013 for this Newsletter



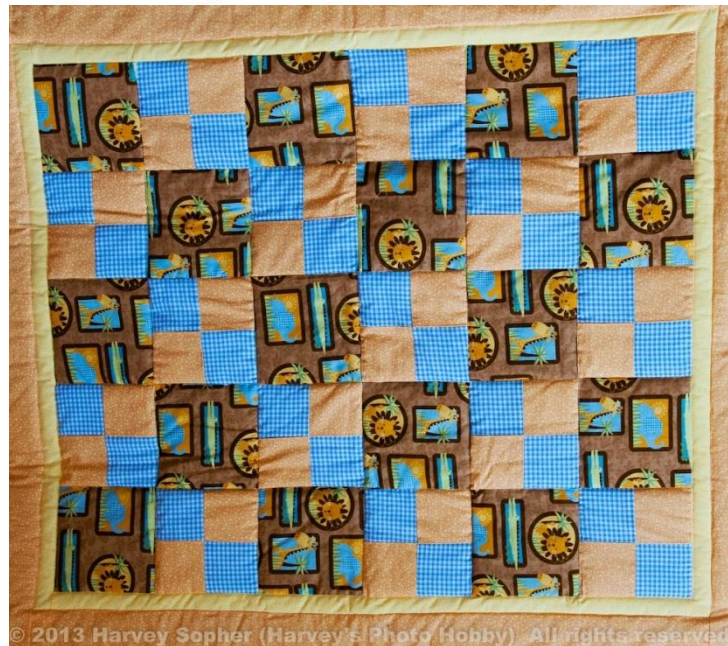
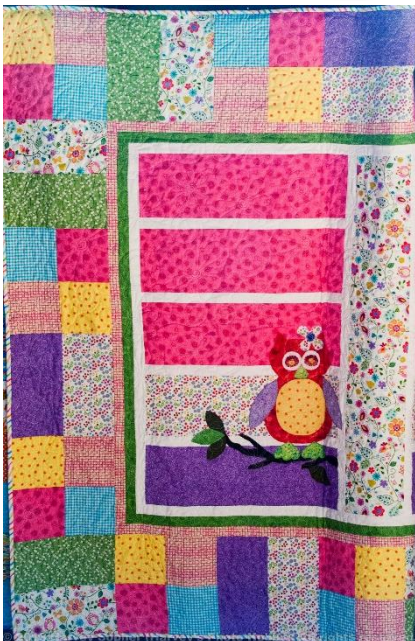
UPCOMING PROGRAMS

FEBRUARY: TRPQG BEES PRESENTATION

Tar River Piecemakers Quilt Guild



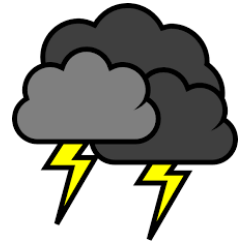
MARCH: YARD SALE





Sunshine & Shadow

We don't want you to go through it alone! If you have anyone you want remembered, please email: Nancy Knapp at HUDSONPUPPY@earthlink.net



TRPQG 2025 GREETERS
FEB: Julie Green
MAR: Beverly Couch

JANUARY and FEBRUARY BIRTHDAYS



- Duane Carpentier
- Beverly Couch
- Gayle Helm
- Katherine Saunders
- Martha Blount
- Ann Davis
- Carolyn Evans
- Karen Young



A BIG TRPQG THANK YOU

Everyone who sews for Outreach
 Everyone who contributes to the TRPQG Newsletter
 Everyone that shares at Sew & Tell
 The Queen Bees
 Harvey for mailing the newsletters & taking pictures at the meetings

Beginning Balance \$7874.05

Balance as of 1/25/2025 \$7874.05





**7076 Ramsey St./HWY 401
Fayetteville, NC 28311
(910) 630-3912 Mon- Sat 9 am-5 pm
<https://www.lovingstitches.net>**

One of the Largest Quilt Shops On the East Coast!

**Embroidery Make
& Take Event.**

Feb 11th 10am-2pm
Make a Free Stand-
ing Lace book
mark.



accuquilt
better cuts, make better quilts



OESD Event

Feb 7th & 8th, 10am-4pm

Make five beautiful embroidery projects! No need to bring anything, machines, kits & lunches will be provided. Event will be led by an OESD instructor. Bring your embroidery friends & make this a mini-retreat. Call to register today.

Free BERNINA Longarm Event

Feb 1st 10am-2pm.

Come to learn & have fun!

Already own a Bernina Longarm? Want to add accessories or make an upgrade?

Special pricing & discounts.

Space will be limited. Please register in advance. Give us a call, or come by today.

made to create **BERNINA**

OESD™

Free Quilt Patterns

Wide variety to choose from, beginner to advanced.

freequiltpatterns.com

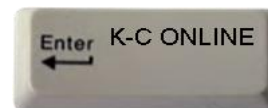
Facebook TRPQG Members Only Update

If you would like to join the TRPQG Members Only Facebook page.

Go to <https://www.facebook.com/groups/475820599214904> and request to be added.

Please send an email to rite1@mindspring.com and let me know that you have sent a request. Occasionally the name in the TRPQG Membership Directory is not the same as your Facebook name. If you will let me know your name in the directory and your name on your Facebook page you can help me speed up the approval process.

Jennie Wright





SAVE THE DATES

TRPQG MEETINGS

February 8th Meeting: Imperial Centre

Deadline for newsletter submissions is the 25th

EVENTS YOU MIGHT ENJOY

Charlotte Quilters Guild Quilt Show- Park Expo, Charlotte, NC

Mar 7-8, 2025

Capital Quilters Quilt Show- Kerr Scott Bldg, NC State Fairgrounds, Raleigh, NC

Mar 14-15, 2025

Original Sewing and Quilt Expo- Raleigh, NC

May 1-3, 2025

Turtle Pretzels ~ Febuary 2025

Compliments of Jinx Abernathy

TIME: 20 min **YIELD:** 36 Turtles

INGREDIENTS:

- 36 pecan halves
- 36 mini pretzels
- 36 Rolo® candies

INSTRUCTIONS:

Heat oven to 350 F.
 Unwrap candies, if necessary, set aside.
 Line a baking sheet with parchment paper.
 Place pecan halves on the baking sheet in a single layer & bake until lightly toasted, 5-6 minutes; Shake the baking sheet once, halfway through baking.
 Lift the parchment paper, WITH the pecans & transfer to a cooling rack.
 Reline the baking sheet with parchment paper & arrange pretzels on the baking sheet; Top each pretzel with an unwrapped candy; Bake until the candies soften, but DO NOT melt, 4-5 minutes.
 Remove the baking sheet from the oven & gently press a roasted pecan half on top of each candy, just enough for the candy to fill the pretzel.
 Set aside to cool completely before serving.
 Store in an airtight container.



- FABRICS
- PATTERNS
- QUILTING SERVICES
- MACHINE SERVICE & REPAIR

Quilts Like Crazy and Embroidery

Quilting, Sewing, Embroidery Supplies & More!

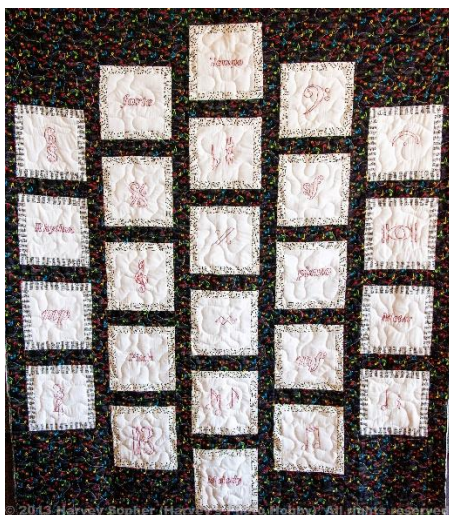
STORE HOURS

M-F 10AM - 5PM
SAT 10AM - 3PM
SUN CLOSED

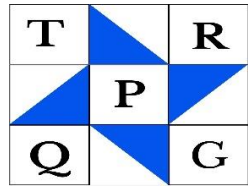


1241-08 S Main St, Wake Forest, NC 27587
www.quiltslikecrazy.com (984) 237-0071

Follow us!



Tar River Piecemakers Quilting Guild



P.O. Box 7041 Rocky Mount NC 27804

Leadership Team:

Duane Carpenter

Carol Gates

Mary Selecky

Lori Mann

Secretary: Sarah Oberlin

Treasurer: Rosalyn Ryers

Sunshine & Shadow: Nancy Knapp

Membership:

Jinx Abernathy

Amanda Jackson

Joyce Kirby

Library: Maryann Rettino

Martha Blount

Beekeeper: Pam Smith

Website: Harvey Sopher

Newsletter: Michele Carpenter

Facebook: Jennie Wright

Charity Outreach:

Katherine Saunders

Hospitality: Lin Varney

Public Relations: Lin Varney

Harvey Sopher

All area codes are 252 unless noted

Newsletter Advertising for TRPQG Members

If you are a TRPQG member and have personal sewing related items you no longer want or use and you would like to sell or gift them you can list them in the newsletter. Please send the item description, price and your contact information to michele25@suddenlink.net. This section of the newsletter will be removed from the newsletter before being posted on the public website.

Items will be limited to space available in the newsletter and first come first serve. The newsletter and the TRPQG are not responsible in any way for any transactions resulting from these advertisements. The newsletter is simply providing what we hope is a benefit for the members of the TRPQG guild.

TRPQG Official Charities

Patriotic quilts: Any size

Quilts for Christian Adoption Agency: any size

Please include a sample square from the quilt pattern which is given to the birth mother.

Isolette covers for Vidant Hospital: should be no larger than 36 x 36 .

Quilts for Nash Hospital Nursery: They accept any size quilts they use to send the babies home. We will accept smaller blankets that are knitted or crocheted. We can always find someone who has a need.

Additional charities our TRPQG members support.

Oncology Department Quilts: can always use lap size quilts and mug rugs for them.

Bereavement wraps: 12" x 12" or 15" x 15" (use pattern)

Mother's Hearts: ask for pattern used for preemies in neonatal departments.

Preemie Beanies: (knitted) ask for pattern or Google them

Adult Beanies: (knitted) ask for pattern or Google them

Comfort Bags: For Police department bags

Quarterly Challenges: To be announced



Viking Topaz 50

Not heavily used. Embroidery unit, extra hoops (magnetic). Lots of feet, including walking foot, some date back to 2006, but in good condition. Manual and foot book. Price is \$500, just looking for someone to use and enjoy.

Contact Frankie Powell (252) 908-4172



If you are a member of the TRPQG and you machine quilt for others please send your name, phone number and email address to michele25@suddenlink.net. In future issues of the newsletter I will list your contact information so TRPQG members can contact you for their quilting needs.

Coffee & Cookies
February- Mandy Jackson

As of 14 DECEMBER 2024:
66 Regular Members
7 Founding Members
2 Honorary Members
2 Junior Members
77 Total Members



Can you provide Coffee & Cookies, or a snack, just ONCE? If you can, PLEASE sign-up!



Welcome
NEW MEMBER
Macey Lynn Tyndall
Junior Member

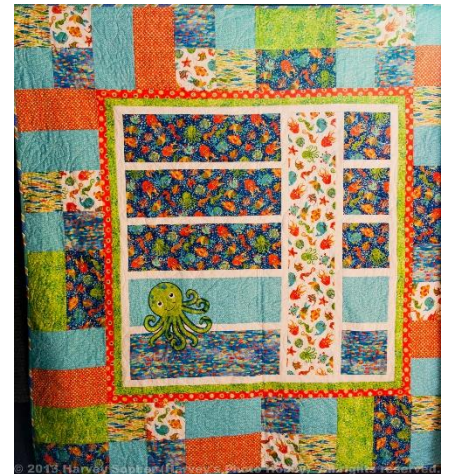


219 NC Hwy 98E Bunn, NC
 919-497-0828 • www.thebrokenneedle.com

Regular Shop hours
 Tuesday-Saturday 10 am til 5 pm

Janome authorized dealer and service center.

JANOME Fabric - Notions - Patterns - Kits - Classes



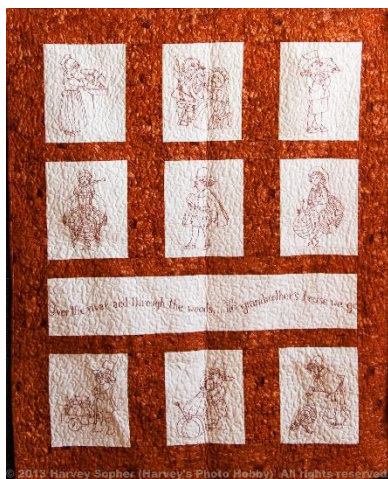
Quilting Bees



A Quilting Bee is a gathering for quilters to foster creativity, connection, and community so that others feel a sense of belonging.

“Meet the Bees” at the February Meeting

Busy Bees	Imperial Art Centre on the 2nd Tuesday of each month @ 10 am Queen Bee is Lisa Clark.
Cutting Corners	Braswell Library on the 3rd Friday of the month @ 10 am. Queen Bee is Ramona Orzell.
Happy Hooper's	Meetings are held on 3rd Saturday of each month @ 10 am at the home of Frankie Powell. Queen Bee is Frankie Powell.
Sew-Social	Open Sew Format @ the Imperial Art Center on the 4th Saturday of each month. Open to all members. Door to the Education Building is open at 9:30AM. Please contact Pam Smith.
EQ8 Electric Quilt	Imperial Art Centre 10 am. - 4th Saturday of each month. Queen Bee is Debbie Nivison.
Patriotic	Braswell Library – 1 st Tuesday of each month at 10 am. Queen Bee is Jennie Wright.



QUILTOLOGY – February 2025

Crazy Heart Mug Rug - 8" x 8"

**All seams are measured at 1/4"*

Supplies for 8"x8" Mug Rug:

- Freezer Paper: 10"x10"
- Backing Fabric: 9"x9"
- Cotton Batting: 9"x9" (Polyester COULD melt)
- Valentine Fabric Scraps, about 1"-2" wide & various lengths
- Gathered Lace Trim: 15"
- Purchased Ribbon Bow: 1"

STEP-1: Prepare the Heart Pattern:

- > Fold the Freezer Paper in half.
- > Place the Crazy Heart Template on the fold of the Freezer Paper.
- > With PAPER scissors, cut out the Template; unfold the Freezer Paper for the full sized heart pattern.
- > Set aside until the Top Section is finished.



STEP-2: Prepare the Backing Section:

- > Cut & press Backing Fabric; lay it flat, WRONG-SIDE-UP.
- > Cut the Batting; lay it flat, on top of the Backing.
- > Set aside until the top of the Mug Rug is finished.



STEP-3: Prepare the Top Section:

- > Choose a variety of Valentine scraps & stitch them into a patchwork piece measuring about 10" square, the patchwork can be an irregular shape. Press the seams flat.
- > Cut the patchwork piece into 2-3 pieces; set the cut pieces in different directions, using the Crazy Heart Pattern.
- > When you find the "Crazy" layout you like, stitch the pieces together.
- > Place the Top Section, RIGHT-SIDE-UP, onto the Backing Section; pin or baste in place.
- > Quilt the mug rug with any design you like.
- > Position the Crazy Heart Pattern over the quilted patchwork: pin in place & cut around the pattern.

STEP-4: Join the Units:

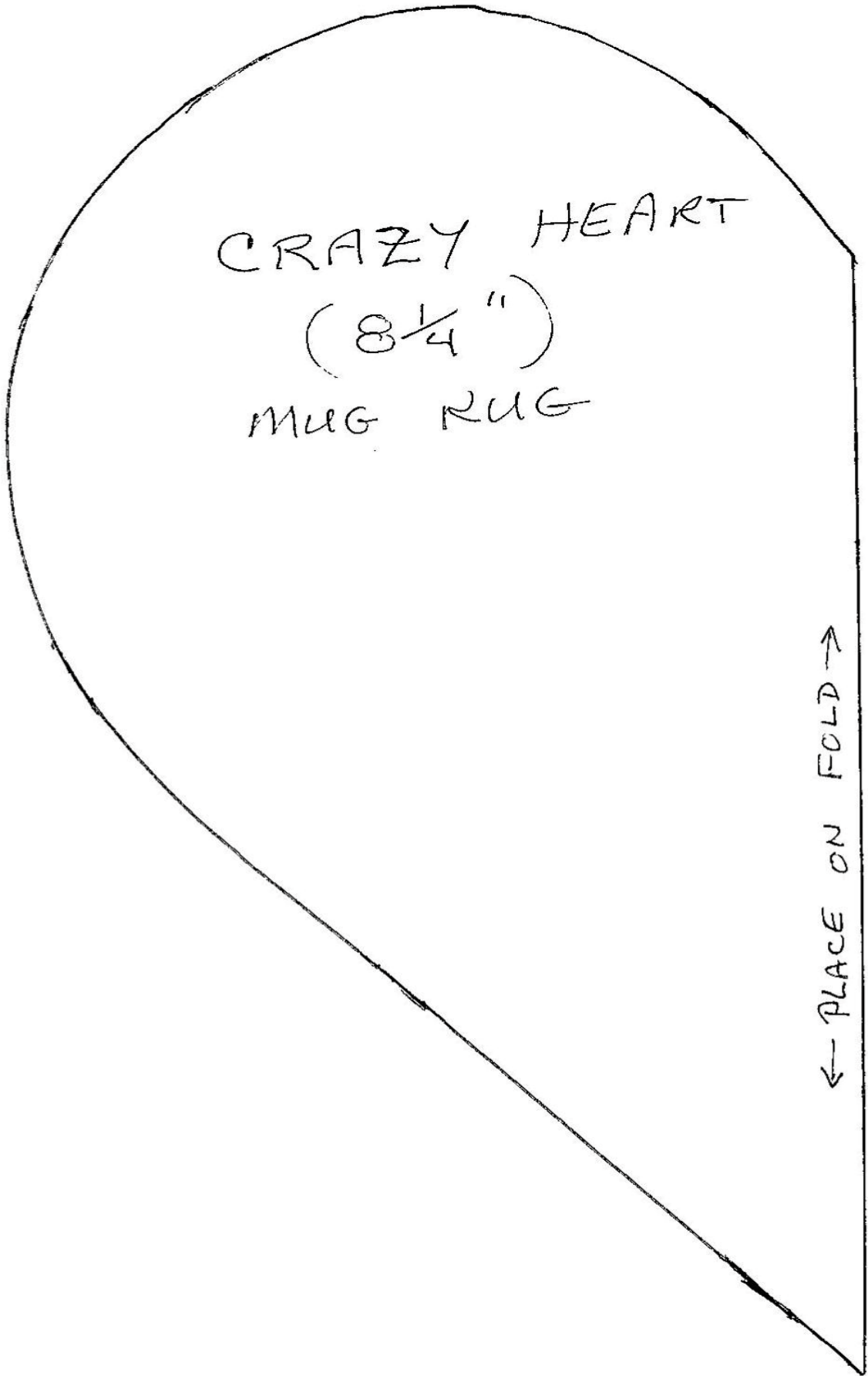
- > With WRONG-SIDE-UP, position the Crazy Heart quilted patchwork on top of the Backing Section; pin or clip in place.
- > Using a 1/4" seam allowance, stitch around the mug rug, leaving a 3-4" opening for turning.
- > Trim the Backing Section to the same size & shape as the heart, being careful NOT to cut into seam.
- > Turn the mug rug right sides out; tuck the opening edge to the inside; top stitch around the mug rug; press well.

STEP-5: Final Touches to the Mug Rug:

- > With RIGHT-SIDE-UP, pin or clip the lace trim around the edge of the mug rug, covering the top stitching.
- > Hand stitch the purchased bow in the center of the heart notch. FINISHED!

**If this is a donation, don't forget to sew on a label!*





TRPQG AGENDA FEBRUARY 8, 2025

SOCIAL/SIGN IN: 9:00 to 9:30 AM

WELCOME: 9:30 AM

MINUTES OF THE PREV. MONTH APPROVED AS PUBLISHED IN THE NEWSLETTER

1. MOTION TO APPROVE & 2ND

TREASURER'S REPORT APPROVED AS PUBLISHED IN THE NEWSLETTER

1. MOTION TO APPROVE & 2ND

BIRTHDAYS JAN & FEB: Duane Carpentier, Beverly Couch, Gayle Helm, Katherine Saunders, Martha Blount, Ann Davis, Carolyn Evans, Karen Young

Committee Reports- Short summaries

- Outreach - Katherine Saunders
- Sunshine and Shadow - Nancy Knapp
- Library - Martha Blount and Maryann Rettino
- Newsletter - Michele Carpentier
- Facebook - Jennie Wright
- Bee Keeper - Pam Smith
- Programs - Leadership Team
- Public Relations - Harvey Sopher, Lin Varney
- Website – Harvey Sopher

OLD BUSINESS

1. Bio Forms to Sarah Wade/Michele Carpentier
2. Sign up for greeter and/or bringing coffee

NEW BUSINESS

- Upcoming Events

 1. March – Yard Sale

SEW AND TELL – Reminder to refrain from talking while members are sharing their quilts.

BREAK

TRPQG BEES PRESENTATION

MEMBERSHIP REPORT

DRAWINGS