

2025

December
Volume 28 Issue 4

Quilting Times

Join us!!

Tar River Piecemakers Quilting Guild

Meets at 9:00 the second Saturday of every month at
the Arts Center at the Imperial Centre for Arts & Sciences
344 Falls Road, Rocky Mount, NC. 27804

From The Leadership Team!

Greetings Quilters-

Let's kick off the holiday season with you at our December meeting! On December 13th we will have our traditional potluck accompanied by a quilting-related fun game. Your wonderful culinary creations are most welcome!

If you want to participate in the Gift Exchange, bring a wrapped (recommended value \$10). Surprise your fellow quilters and be surprised by their creativity and generosity. We are looking forward to seeing your creations in the Foundation Paper Piecing challenge! Please remember to drop off your challenge quilts outside the meeting room door, the location will be clearly marked. The display and judging will be blind to ensure unbiased competition. There will be prizes for the first, second and third place, and for the Viewers Choice.

To the quilters who participated in this years Mystery quilt, we will be sharing our finished quilts (or just quilt tops) at our January meeting.

Happy Quilting! See you on December 13th.

Nadia, Lori and Julie – Your Leadership Team

Welcome new members!

Join the TRPQG Members Facebook page

Join the EQ8 & Sew-Social Bees on the 4th Saturday

Our Next Meeting

Saturday December 13, 2025
9:00AM Imperial Centre

Bring a Friend

Wear Your Name Tag

Return Borrowed Library Books

Tar River Piecemakers Quilting Guild Meeting Minutes November 8, 2025

Nadia Pshenitsyna called the TRPQG meeting to order at 11:15 am and welcomed everyone. Nadia wished Happy Birthday to all with a birthday in November.

A motion to approve the Meeting Minutes for October was made by Harvey Sopher and seconded by Geri Womack. A motion to approve the Treasurer's Report for October was made by Sarah Wade and seconded by Mary Selecky. Both motions passed.

Committee Reports:

Charity Outreach: Mary Selecky will be making kits for donation. Labels will be available.

Patriotic Bee: Duane Carpentier: A separate Quilts of Valor presentation ceremony occurred at the Beer Factory for the Ride of Honor organization.

New Business:

1. Mystery Quilt Blocks - All instructions have been made available. Nadia brought a quilt top of her rendition of the Mystery Quilt to show the guild. All Mystery Quilts should be displayed at the January 2026 meeting.
2. The December Christmas party will be a potluck. Please bring refreshments to share. It will also be a showcase for the guild's Foundation Paper Piecing (24 in x 24 in minimum). People who want to participate in the gift exchange should bring packaged or wrapped gifts. The gift limit is \$10.

Monthly Program: Quilt of Honor Presentation, performed before meeting

Membership Report: Jinx Abernathy: 29 returning members and many guests were in attendance. One new member joined this meeting!

Drawing Winners:

Donations: Billie Howell

Sew & Tell: Lin Varney

Membership (Blue Tickets): Joyce Kirby

Next meeting will be on December 13th. Meeting Adjourned at 12:15 pm.

Respectly Submitted,
Sarah Oberlin, Secretary

Book Review

13 Remarkable Quilts with Timeless Appeal

By Martingale

If you love blue and white, this is the book for you. There are thirteen quilts featured, all done in blue and white. The quilts are all classic in design and should look new and fresh for decades. The first, Country Surprise is constructed from 32 assorted blue fat quarters plus white yardage. It also requires a yard of a royal blue print for the inner border and binding. Once you have constructed the various parts, it looks straight-forward to assemble.

The second quilt is equally stunning. It is called Baskets in Blue. The baskets use various small blue prints and are surrounded by white or off-white fabric. Both of these quilts rely heavily on half square triangles.

Another pattern is called Antique Hunter's Star. The original pattern would have been cut with scissors. The author has revised the pattern, so that it can be cut with a rotary cutter. She has used navy blue and white throughout the quilt.

Bliss is a stunning pattern using navy blue and white. There are thirty-six star blocks constructed in blues. There are two borders of sawtooth blocks and a beautiful hand-appliques border between them.

Sapphire Star has almost 2,000 triangle squares. The author suggests starching the fabric to construct the triangles faster. This quilt lends itself to beautiful quilting on the white blocks.

All of the quilts look as though they would be good to work on throughout a long winter. In each case, I would say the quilting makes the quilt.

Your Quilt Librarian

Martha Blount

🎄 December Greetings, Tar River Piecemakers! 🎄

As we gather for our final meeting of the year, let's take a moment to celebrate all the creativity, friendship, and stitches shared throughout 2025. Our quilts have told stories, spread warmth, and reflected the joy that comes from working together.

December is a time for reflection and gratitude — for the fabrics that inspired us, the projects we finished (and those still waiting patiently!), and the fellowship that keeps our guild vibrant. May this season fill your homes with peace, your hearts with cheer, and your sewing rooms with just enough sparkle to inspire the year ahead.

Let's enjoy this festive meeting with laughter, holiday treats, and the shared love of quilting that brings us together. Here's to a wonderful close to 2025 and a bright, creative new year ahead!

Warm wishes and happy stitching,

The Tar River Piecemakers Quilting Guild

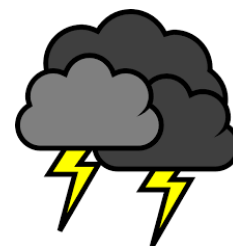
Submitted by Harvey Sopher





Sunshine & Shadow

We don't want you to go through it alone! If you have anyone you want remembered, please email: Nancy Knapp at HUDSONPUPPY@earthlink.net



DECEMBER BIRTHDAYS



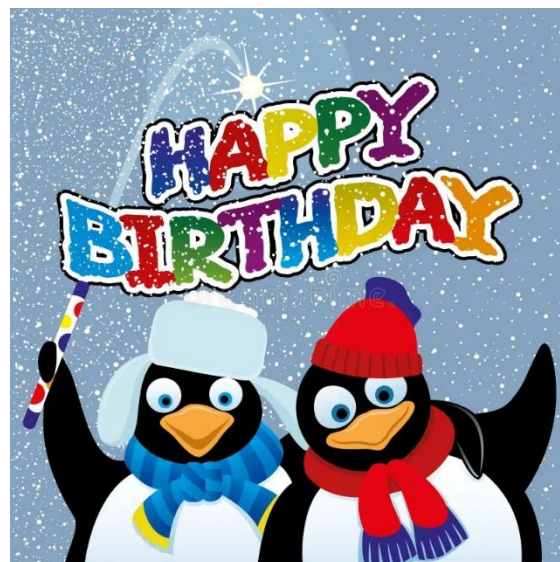
Ligeia Brown

Bonnie Przelomski

Maryann Rettino

Shandra Stocks

Geri Womack



A BIG TRPQG THANK YOU

Everyone who sews for Outreach

Everyone who contributes to the TRPQG Newsletter

Everyone that shares at Sew & Tell

The Queen Bees

Harvey for mailing the newsletters & taking pictures at the meetings

Facebook TRPQG Members Only Update

If you would like to join the TRPQG Members Only Facebook page.

Go to <https://www.facebook.com/groups/475820599214904> and request to be added.

Please send an email to rite1@mindspring.com and let me know that you have sent a request. Occasionally the name in the TRPQG Membership Directory is not the same as your Facebook name. If you will let me know your name in the directory and your name on your Facebook page you can help me speed up the approval process.

Jennie Wright





SAVE THE DATES

TRPQG MEETING

December 13 Meeting: Imperial Centre

Deadline for newsletter submissions is the 25th

EVENTS YOU MIGHT ENJOY

Quilting & Fiber Art Marketplace, Dennis A Wicker Civic Center, Sanford, NC

Jan 9-10, 2026

QUILTCON, Raleigh Convention Center, Raleigh, NC

February 19-22, 2026

Capital Quilters Quilt Show, NC State Fairgrounds, Raleigh, NC

March 13-14, 2026

Quilting & Fiber Art Marketplace

CLASSES & WORKSHOPS
ADDED!!

OVER 30 AMAZING
VENDORS!!

SIGN UP
NOW

JANUARY 9TH & 10TH 2026

THE DENNIS A WICKER CIVIC CENTER
SANFORD NC

HOURLY PRIZE DRAWINGS & GRAND PRIZE DRAWING
EACH DAY! **FREE** BERNINA SERGER & SEWING MACHINE

SAVE THE DATE

Learn more, Register for
classes and buy tickets in
advance at this link!

WWW.FIBERARTSHOWNC.COM



- FABRICS
- PATTERNS
- QUILTING SERVICES
- MACHINE SERVICE & REPAIR

Quilts Like Crazy and Embroidery

Quilting, Sewing, Embroidery Supplies & More!

STORE HOURS

M-F	10AM - 5PM
SAT	10AM - 3PM
SUN	CLOSED

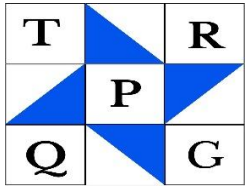


1241-08 S Main St, Wake Forest, NC 27587
www.quiltslikecrazy.com (984) 237-0071

Follow us!



Tar River Piecemakers Quilting Guild



P.O. Box 7041 Rocky Mount NC 27804

Leadership Team:

Julie Green

Lori Mann

Nadia Pshenitsyna

Secretary: Sarah Oberlin

Treasurer: Rosalyn Ryers

Sunshine & Shadow: Nancy Knapp

Membership:

Jinx Abernathy

Amanda Jackson

Joyce Kirby

Library: Maryann Rettino

Martha Blount

Beekeeper: Pam Smith

Website: Harvey Sopher

Newsletter: Michele Carpentier

Facebook: Jennie Wright

Charity Outreach:

Katherine Saunders

Hospitality: Lin Varney

Public Relations: Lin Varney

Harvey Sopher

TRPQG Official Charities

QOV: preferred size 60"x80", minimum size 55"x 65", maximum size. 100%cotton preferred. Patriotic fabric themes are encouraged, but not mandatory.

Quilts for Christian Adoption Agency: any size

Please include a sample square from the quilt pattern which is given to the birth mother.

Isolette covers for Vidant Hospital: should be no larger than 36 x 36 .

Quilts for Nash Hospital Nursery: Accept any size quilts they use to send the babies home. We will accept smaller blankets that are knitted or crocheted. We can always find someone who has a need.

Additional charities our TRPQG members support

Oncology Department Quilts:lap size quilts and mug rugs

Bereavement wraps: 12" x 12" or 15" x 15" (use pattern)

Mother's Hearts: ask for pattern used for preemies in neonatal

Premie Beanies: (knitted) ask for pattern or Google them

Adult Beanies: (knitted) ask for pattern or Google them

Comfort Bags: For Police department bags

All area codes are 252 unless noted

Newsletter Advertising for TRPQG Members

If you are a TRPQG member and have personal sewing related items you no longer want or use and you would like to sell or gift them you can list them in the newsletter. Please send the item description, price and your contact information to michele251970@gmail.com. This section of the newsletter will be removed from the newsletter before being posted on the public website.

Items will be limited to space available in the newsletter and first come first serve. The newsletter and the TRPQG are not responsible in any way for any transactions resulting from these advertisements. The newsletter is simply providing what we hope is a benefit for the members of the TRPQG guild.



If you are a member of the TRPQG and you machine quilt for others please send your name, phone number and email address to michele251970@gmail.com. In future issues of the newsletter I will list your contact information so TRPQG members can contact you for their quilting needs.



Jette Williams

As of 8 NOV 2025:
 75 Regular Members
 7 Founding Members
 2 Honorary Members
 1 Junior Members
85 Total Members

2025 – 2026 Greeters

December – Ann Ward-Fuchs
 January – Duane & Michele Carpentier
 February –
 March - Beverly Couch

Coffee & Snacks

December – Ann Davis
 January – Duane & Michele Carpentier



MEMBERSHIP

STATISTICS





219 NC Hwy 98E Bunn, NC
 919-497-0828 • www.thebrokenneedle.com
 Regular Shop hours
 Tuesday-Saturday 10 am til 5 pm
 Janome authorized dealer and service center.

JANOME

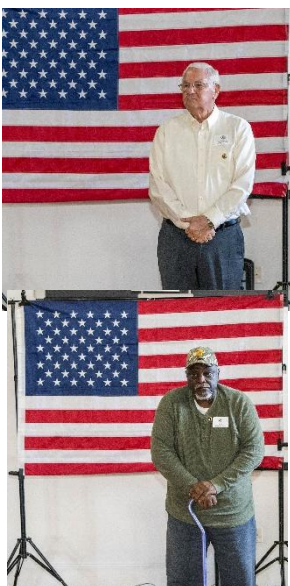
Fabric - Notions - Patterns - Kits - Classes

Quilting Bees



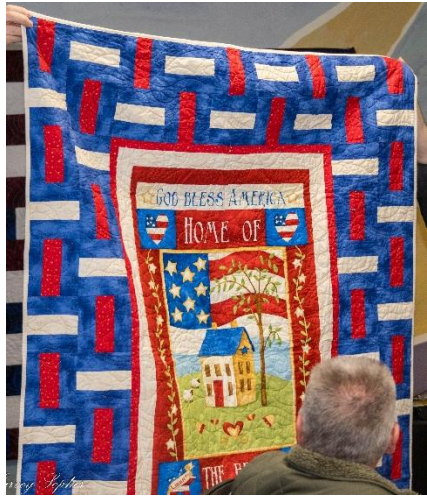
A Quilting Bee is a gathering for quilters to foster creativity, connection, and community so that others feel a sense of belonging.

Busy Bees	<p>Imperial Art Centre 2nd Tuesday of each month @ 10 am Meeting Place: Englewood Presbyterian Church 100 S Englewood Drive RMT Program: Christmas Brunch Celebration Queen Bee is Lisa Clark.</p>
Cutting Corners	<p>Braswell Library on the 3rd Friday of the month @ 10 am Meeting Place: Englewood Presbyterian Church 100 S Englewood Drive RMT Program: Potluck Lunch & Christmas Celebration Queen Bee is Ramona Orzell.</p>
Happy Hooper's	<p>Meetings 3rd Saturday of each month @ 10 am at the home of Frankie Powell. Program: Pillow Stitching & Construction Queen Bee is Frankie Powell.</p>
Sew-Social	<p>Open Sew Format @ the Imperial Art Centre on the 4th Saturday of each month. Door to the Education Building open at 9:30AM. Everyone is welcome – bring your UFO's, or any project you'd like to finish or just come chat and see what projects are being worked on. Due to the Christmas Holiday – December meeting is canceled. Next Meeting will be January 24, 2026 Please contact Pam Smith.</p>
EQ8 Electric Quilt	<p>Imperial Art Centre 10 am. - 4th Saturday of each month. Due to the Christmas Holiday – December meeting is canceled. Queen Bee is Debbie Nivison.</p>
Patriotic	<p>1st Tuesday of each month at 10 am Meeting Place: Englewood Presbyterian Church 100 S Englewood Drive, RMT Program: Discussions on the Quilts of Valor Presentations. Bee Leaders are Jinx Abernathy & Duane Carpentier.</p>









QUILTOLGY – December 2025

~ ~ ~ Christmas Tree Napkins ~ ~ ~

Courtesy Jinx Abernathy

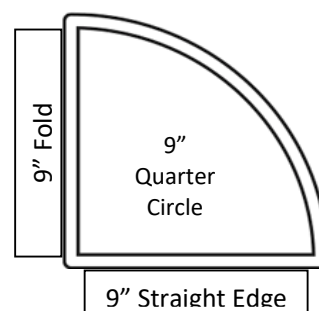
You Will Need:

- Freezer Paper, 9" x 18"
- Ruler or Measuring Tape
- Pencil or Fabric Marking Pen
- Scissors or Rotary Cutter & Mat
- Two Contrasting Fat Quarters (*enough fabric to make TWO napkins*)
- Sewing Machine + Basic Sewing Tools



STEP 1: Prepare the pattern:

- >Fold the freezer paper in half, lengthwise.
- >Place a ruler or measuring tape on the point of the folded edge.
- >Measure 9" along the folded edge; continue measuring & marking, in an arc, every 2-3", from the starting point down to the straight edge of the paper. You now have a 9" quarter-circle.
- >Cut out the quarter-circle; unfold it; this is your Semi-Circle Pattern.



STEP 2: Cut the fabric:

- >Place the two Fat Quarters together, right sides facing each other & bottom edges even.
- >Pin the Semi-Circle Pattern on the fabric & cut it out.
- >Remove the pattern but leave the fabrics together.



STEP 3: Pin & mark the fabrics:

- >Align the edges of the fabric pieces & clip or pin.
- >Sew around the semicircle, leaving a 3-4" opening on the straight edge to turn the piece around.



STEP 4: Turn inside out:

- >Turn the fabric right side out & push out the edges.
- >Clip the curve of the napkin & the bottom corners to allow the napkin to lay flat.
- >Iron everything flat, including the seam allowances on the opening, iron the seams inside of the napkin.

STEP 5: Mark the Folding-Stitching Line:


- >Mark Folding-Stitching line 6" from the LEFT corner of the napkin, along the straight edge.
- >Using a ruler, draw a 9" line perpendicular to the straight edge.



~ Continued on Next Page ~

STEP 6: Topstitch:

- >Reinforce the beginning & the end of this seam: Beginning on the straight edge, just before the **Fold Line**, topstitch around the napkin, using a scant 1/8" seam allowance.
- >Stop stitching AT the Fold Line, pivot & continue stitch along the Fold Line.

 **NOTE:** Stitching the **Fold Line** isn't absolutely necessary *BUT*, it will definitely make folding much easier, especially after the first time you wash the napkin & forget how it's folded!



STEP 7: Fold the Napkin:

- >Fold & press the napkin on the Fold Line.



- >Fold & press this first fold back onto itself, into thirds.



- >Fold the remaining flap back under the previous fold & press.



- >Line up the remaining flap with both edges of the "tree" & press. Make sure **ALL** the folds are aligned with each other & press everything flat.



Charcuterie Boards

December 2025

Courtesy Jinx Abernathy

Both "Charcuterie" & "Charcuterie Board" are correct, but they have different meanings. "Charcuterie" refers to the art of preparing & presenting cured meats, while "Charcuterie Board" refers to the platter itself which often includes meats, cheeses, fruits, & accompaniments.



Charcuterie is a French term originally meant the production and sale of meat products such as pâté, salami, & ham. "Charcuterie Board" has become a popular American term for a platter arranged with a variety of foods, including cured meats. However, the term is now often used more broadly for a platter that includes cheese, fruits, nuts, & crackers, even if there is little or no meat. Essentially, a "Charcuterie Board" contains items for which "Charcuterie" (*the cured meats*) is a key component, but it is not limited to just meat.

The "Charcuterie 3333 rule" is a guideline for building a balanced & visually appealing Charcuterie Board, suggesting you include **THREE** different meats, **THREE** cheeses, **THREE** types of starches, & **THREE** accompaniments. This rule is a helpful starting point, but it should be adapted to suit your specific tastes & the occasion.

To make a perfect Charcuterie Board, start with a large board & place bowls of spreads, cheeses, & other loose items first. Add meats, crackers, & larger fruits, folding or arranging them to fill the spaces. Fill any remaining gaps with nuts, olives, & garnishes like fresh herbs to create a full & appealing display. Avoid overcrowding, overpowering flavors like pungent cheeses or spicy condiments, & messy, hard-to-eat items like pre-sliced cheese or whole fruits with tough skins. Also, skip items that are difficult to serve or eat, such as watery fruits that can make other components soggy, or sticky sauces without a proper spoon.

Christmas Wreath Charcuterie Board



TRPQG AGENDA DECEMBER 13, 2025

SOCIAL/SIGN IN: 9:00 to 9:30 AM

MINUTES OF THE PREV.

MONTH APPROVED AS PUBLISHED IN THE NEWSLETTER

1. MOTION TO APPROVE & 2ND

TREASURER'S REPORT APPROVED AS PUBLISHED IN THE NEWSLETTER

1. MOTION TO APPROVE & 2ND

BIRTHDAYS: Ligeia Brown, Bonnie Przelomski, Maryann Rettino, Shandra Stocks, Geri Womack

Committee Reports/Short summaries

Outreach - Katherine Saunders

Sunshine and Shadow - Nancy Knapp

Library - Martha Blount

Newsletter - Michele Carpentier

Facebook - Jennie Wright

Bee Keeper - Pam Smith

Programs - Leadership Team

Public Relations - Harvey Sopher, Lin Varney

Website – Harvey Sopher

OLD BUSINESS

1. Bio Forms - We want to get to know you! Give those to Sarah Wade or Michele Carpentier.
2. Sign up to be a greeter or provide coffee

NEW BUSINESS

1. Mystery Quilt will be presented in January
2. January and February programs - general

MEMBERSHIP REPORT: Jinx Abernathy

BREAK: grab a snack or two

Announce winners of the Foundation Paper Piecing Challenge

GIFT EXCHANGE

DRAWINGS

GAMES WITH NADIA